

MAXIMATOR®

Maximum Pressure.

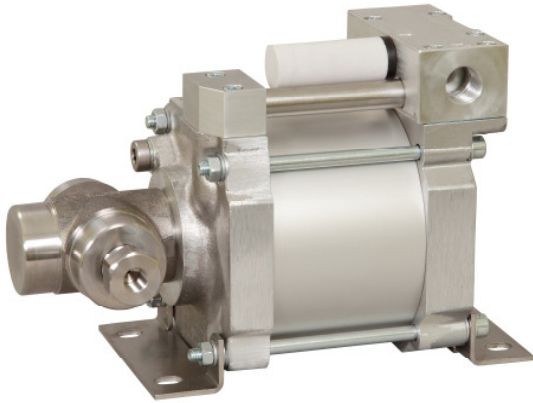


High Pressure Technology • Testing Equipment
Hydraulics • Pneumatics

Technical Data Sheet

S80 SS

» Water service



S80-SS
single acting, single air drive head

Technical Data:

Air drive pressure: 1-10 bar / 14,5 - 145psi

Calculated Outlet Pressure at an air drive of 10 bar/145 psi: 800 bar/ 11.600 psi

Pressure ratio: 1:80

Displacement volume/double stroke 6,2 cm³/ 0.37 cu.inch

Connections:

Inlet: 3/8" BSP

Outlet: 3/8" BSP

Air drive: 1/2" BSP

Maximum operating temperature: 60°C

Net weight: 7 kg

Pressure and flow performances, please see enclosed graph.

Wetted materials of construction:

Top cap: Aluminium

Air cylinder: Aluminium

Seal package: UHMWPE, FKM

Pump Body: 1.4313

HP Piston: 1.4112 (hardened)

Approximate Dimensions:

Height: 272 mm

Depth: 179 mm

Width: 135 mm

Available Accessories:

Air control units with filter pressure regulator, control pressure gauge and shut off valve: S80-SS with C1.5

To protect the pump against excessive outlet pressures or to limit the outlet pressure, a safety valve can be fitted to the air control unit in the air drive line: S80-SS with C1.5/SVair (The required outlet pressure has to be indicated.)

Please consult factory for more information. All technical and dimensional information subject to change. All General Terms and Conditions of sale, including limitations of our liability, apply to all products and services sold.



The technical drawing illustrates the MAXIMATOR S-40 pump in three views: a side view, a top view, and a front view. The side view shows the pump's profile with dimensions 80 mm for the main body width, 11 mm for a small offset, and a total length of 230 mm. Labels indicate the 'Antriebsluft Eingang' (Air drive inlet) at port PL, the 'Ausgang Druckseite' (Discharge port) at P1, and the 'Eingang Saugseite' (Suction port) at S1. The front view shows a total width of 179 mm and a height of 272 mm. The top view shows a width of 135 mm and a depth of 185 mm (with a note for 181 to 189 mm). Dimensions for specific ports are 64 mm for the suction and discharge ports (63/8). The drawing is titled 'MAXIMATOR S - Pumpe / S - Pump' and is a dimension drawing.

MAXIMATOR
 S - Pumpe / S - Pump
 Ansichts-/Maßzeichnung
 Dimension drawing
 Typ / type:
 S 40 - SS, S 80 - SS

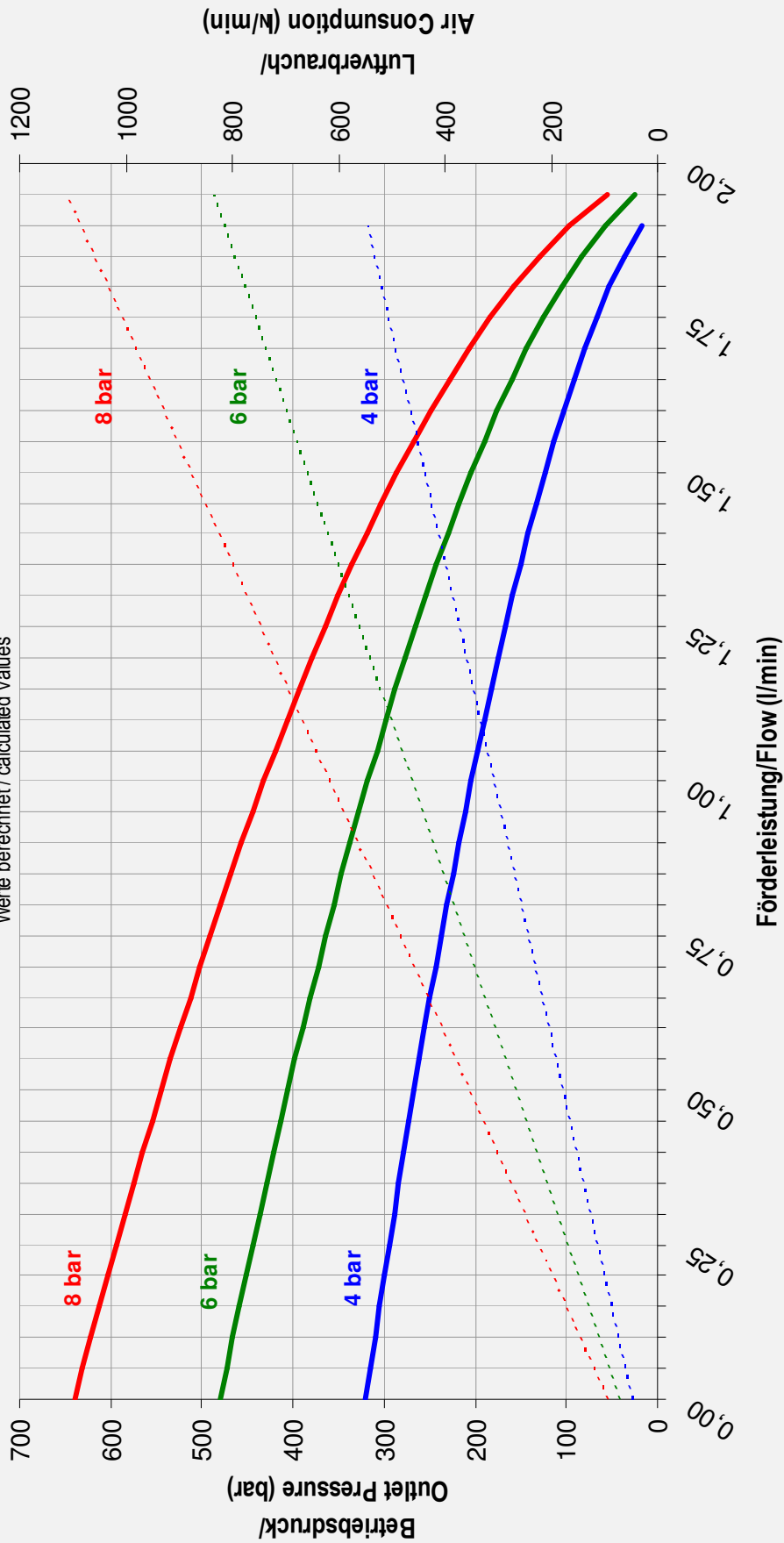
Technical specifications and company information:

MAXIMATOR
 D-99734 Nordhausen, Tel. +49 3631 9533-0, Fax +49 3631 9533-5010
 Maxstab: 1:1
 S 40(80)(160) - SS
 MAXIMATOR S - Pumpe
 (Ansichts-/Maßzeichnung)
 NP 54.00.224 (130)
 07/12

Leistungsdiagramm/Performance Graph S 80 SS

Prüfflüssigkeit/Test Liquid: Wasser-Öl-Emulsion/Water Oil Emulsion ca. 1 - 10 cst

Werte berechnet/ calculated values



- Betriebsdruck bei/Outlet Pressure at 4 bar
- Betriebsdruck bei/Outlet Pressure at 6 bar
- Betriebsdruck bei/Outlet Pressure at 8 bar
- - - Luftverbrauch bei/Air consumption at 4 bar
- - - Luftverbrauch bei/Air consumption at 6 bar
- - - Luftverbrauch bei/Air consumption at 8 bar